

Main Street (SR 1156)

from US 178 to Old Rosman Road (SR 1388)

Local ID: TRAN0042-H

Purpose: Facility Deficiencies

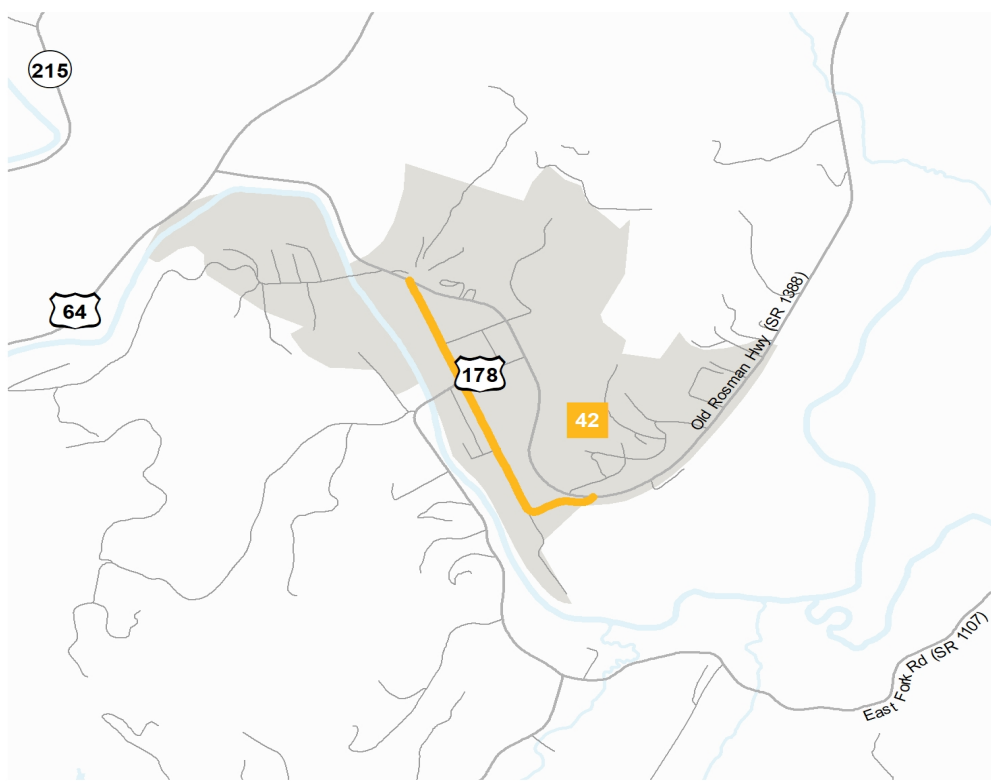
Improvement: Improve Existing

Identified Need

Improve Resiliency to Flooding.

Recommendation

Improve Resiliency to flooding from the French Broad River



Proposal At A Glance

Highway Class	Other
Facility Type	Minor Thoroughfare
Typical Section	-
Section Options	-
Length (miles)	0.67
Existing ROW (feet)	-
Safety Risk Score	-

Proposal Data: 2017 Base Year 2045 Future Year

Improved Route	Existing	Without Proposal	With Proposal
Facility Type	Minor Thoroughfare	-	Minor Thoroughfare
Travel Lanes	2	2	2
Volume (vpd)	2900	2900-4700	-
Capacity (vpd)	10000	10000	10000

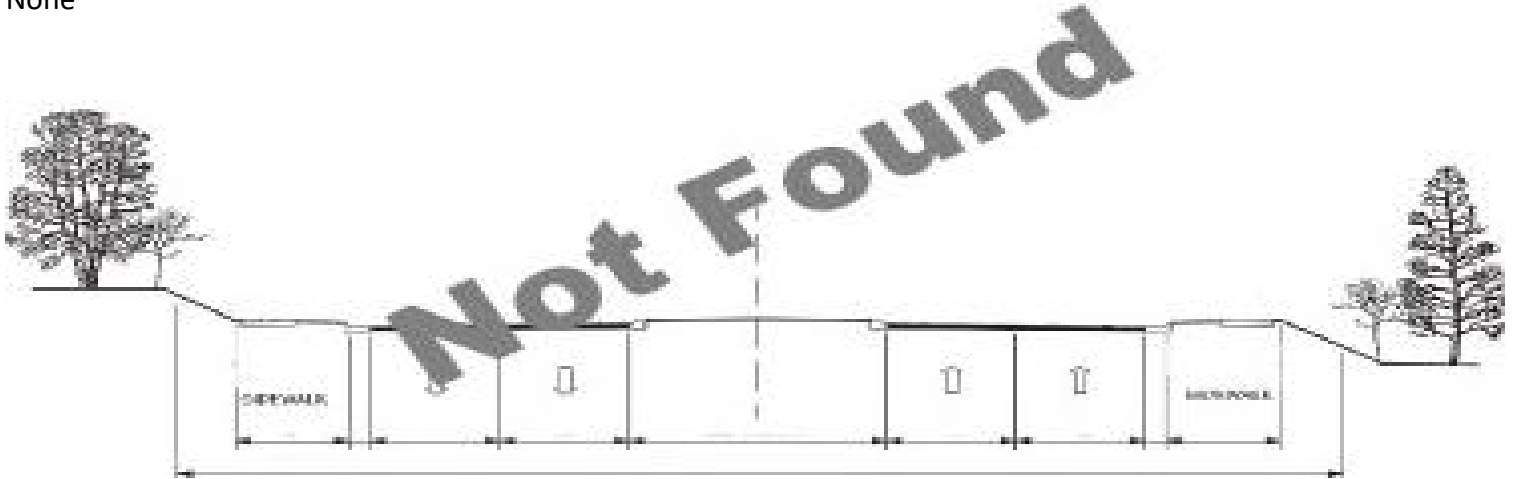
Capacity Data: Year

Facility will be Approaching Capacity (>80%)	-
Facility will be Over Capacity (>=100%)	-



Typical Section Options: TYPICAL SECTION No.

None



Project Overview

Linkage to Other Plans

It is classified as a local road on the Federal Functional Classification System.

Relationship to Land Use

Main Street through Rosman is parallel to US 178 and is lower speed with more access to the surrounding land use. There are several civic facilities along this facility including the town offices, parks, places of worship, and a US Post Office.

Natural & Human Environmental Context

Based on planning level environmental assessment using available GIS data, the proposed project intersects Chapion Park. The area between US 178 and Old Rosman Highway (SR 1388) flood. This includes the southern section of Main Street. All of Main Street is within the 100-year floodplain.

This project is within 150 feet of:

- Water Distribution System Pipes
- Sewer System Pipes
- Multiple Geology Types

Title VI

This recommendation passes through one or more Census Blocks with the following characteristics:

- Between 0% and 25% identify as African American
- Between 0% and 25% identify as 65+
- Between 0% and 5% identify as Asian
- Between 0% and 1% identify as Hawaiian or Pacific Islander

- Between 5% and 15% identify as Hispanic and Latino
- 0% identify as Over 18 w/ Limited English Proficiency (LEP) - Asian and Pacific Islander
- 0% identify as Over 18 w/ Limited English Proficiency (LEP) - Indo-European
- 0% identify as Over 18 w/ Limited English Proficiency (LEP) - Other
- Between 5% and 15% identify as Over 18 w/ Limited English Proficiency (LEP) - Spanish
- 0% identify as Native American
- Between 15% and 25% identify as Below Poverty Line
- 0% identify as Some Other Race
- 0% identify as Two of More Races
- Between 0% and 15% identify as Households with No Car